

DERBY CITY WOUND HUB

July 9, 2021

INITIATIVES

- Promote knowledge and critical thinking
 - Bedside stakeholder rounds
 - Wound Champion
- Platforms to deliver consistent care
 - Facility product availability
 - Pressure redistribution surfaces
- Programs for stakeholder engagement
 - Bedside stakeholder rounds
- Support patient/family education
 - Promote engagement in care
- Improve documentation

WHICH OF THE FOLLOWING HAVE YOU READ IN ITS ENTIRETY?

1. State Operations Manual- Guidance to Surveyors for Long Term Care, F686
2. CMS Long-Term Care Facility Resident Assessment Instrument 3.0 Users Manual, Section M Skin Conditions
3. Both
4. Neither

READ THEM!

KNOW THEM!

- State Operations Manual- Guidance to Surveyors for Long Term Care Facilities November 22, 2017
https://www.cms.gov/Regulations-and-Guidance/Guidance/Manuals/downloads/som107a_p_pp_guidelines_ltcf.pdf
- CMS Long-Term Care Facility Resident Assessment Instrument 3.0 Users Manual, Section M Skin Conditions, October 2018
<https://downloads.cms.gov/files/1-MDS-30-RAI-Manual-v1-16-October-1-2018.pdf>

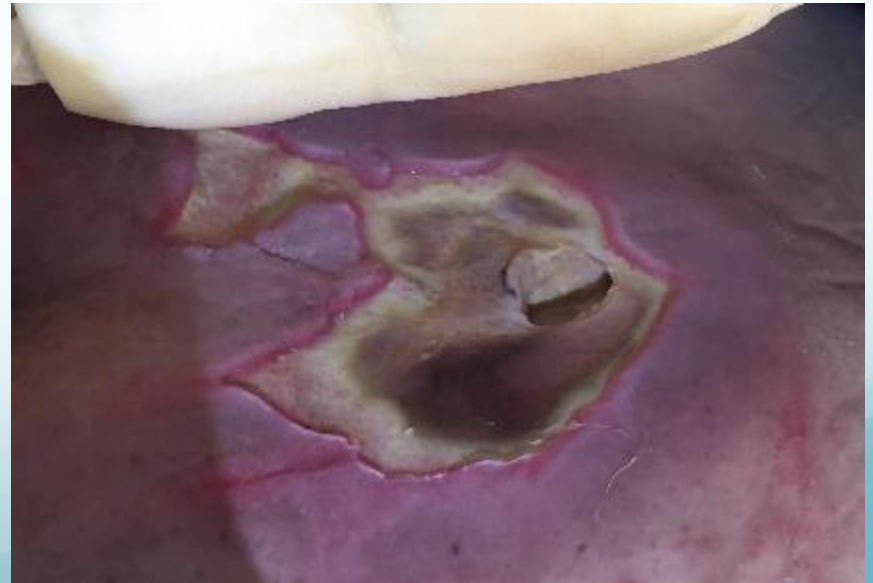
F686

- The first step in the prevention of pressure injuries (PIs) is the identification of the resident at risk of developing PIs. This is followed by implementation of appropriate individualized interventions and monitoring for the effectiveness of the interventions.



LOOK AT THE WOUND...

- A deep tissue pressure injury identified on admission could lead to the appearance of an unavoidable Stage 3 or 4 pressure ulcer



AND THE PATIENT TOO!!!

- The comprehensive assessment should address factors that have been identified as having an impact on the development, treatment and healing of PIs
- Identify risk factors, pressure points, under-nutrition/hydration deficits, and the impact of moisture on skin. Evaluate for multi-system organ failure and end-of-life condition
- Refusal of care and treatment- evaluate the basis for the refusal, and potential alternatives as indicated
- State Operations Manual Appendix PP - Guidance to Surveyors for Long Term Care Facilities (Rev. 173, 11-22-17)



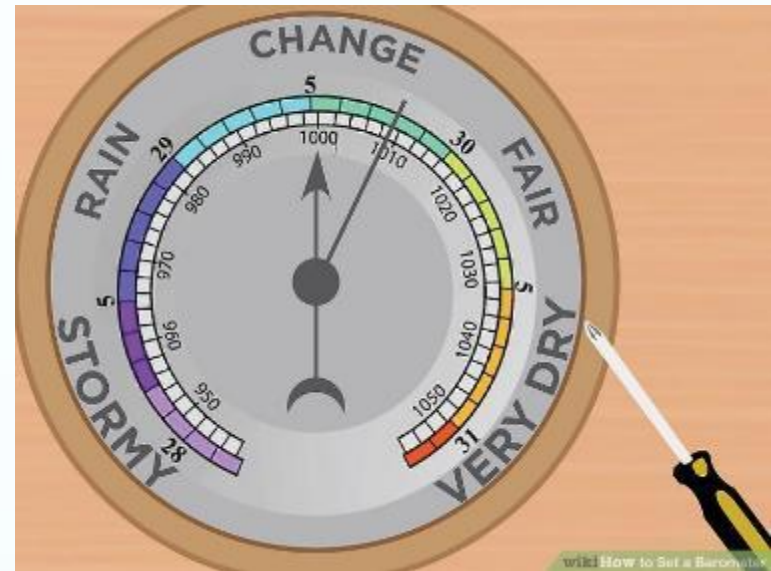
PAY ATTENTION

- MULTIPLE FACTORS:
 - Pressure intensity, pressure duration, and tissue tolerance, significantly affect the potential for the development and healing of PIs.
 - The comprehensive assessment evaluates the resident's intrinsic risks, the resident's skin condition, and other factors which place the resident at risk for the development of or hinder the healing of PIs.
 - An individual may also have various intrinsic risks due to aging, such as decreased subcutaneous tissue and lean muscle mass, decreased skin elasticity, and impaired circulation or sensation.
- State Operations Manual Appendix PP - Guidance to Surveyors for Long Term Care Facilities (Rev. 173, 11-22-17)



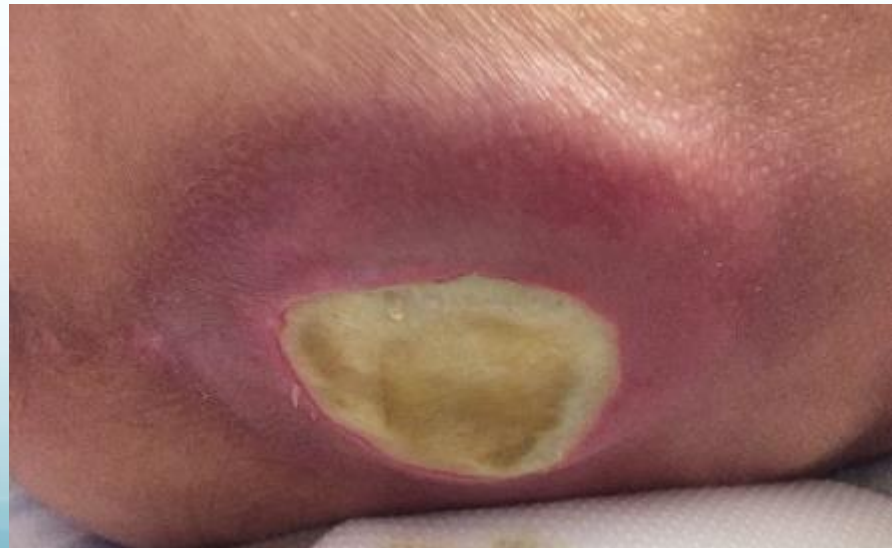
RISK FACTOR FOR PRESSURE INJURY

- Immobility
- Incontinence (urinary and/or fecal)
- Decreased functional ability
- Advanced age
- End-stage renal disease
- Diabetes
- Impaired diffuse or localized blood flow
- Drugs such as steroids
- State Operations Manual Appendix PP - Guidance to Surveyors for Long Term Care Facilities (Rev. 173, 11-22-17)



RISK FACTORS FOR PRESSURE INJURY

- Resident refusal of care and treatment
- Drugs such as steroids
- Cognitive impairment
- Under nutrition, malnutrition, and hydration deficits
- Healed ulcer



FROM THE RULE BOOK

- If an injury arises from a combination of factors that are primarily caused by pressure, then the area should be included in this section as a pressure injury.
- Residents with diabetes mellitus (DM) can have a pressure, venous, arterial, or diabetic neuropathic ulcer. The primary etiology should be considered when coding whether a resident with DM has an injury that is caused by pressure or other factors.
- CMS Long-Term Care Facility Resident Assessment Instrument 3.0 Users Manual, Section M Skin Conditions, October 2018



KEEP IT GOING

- What programs have you put in place at your facility that have led to improved:
 - Patient/family satisfaction
 - Stakeholder engagement
 - Improved outcomes

BRAINSTORM

